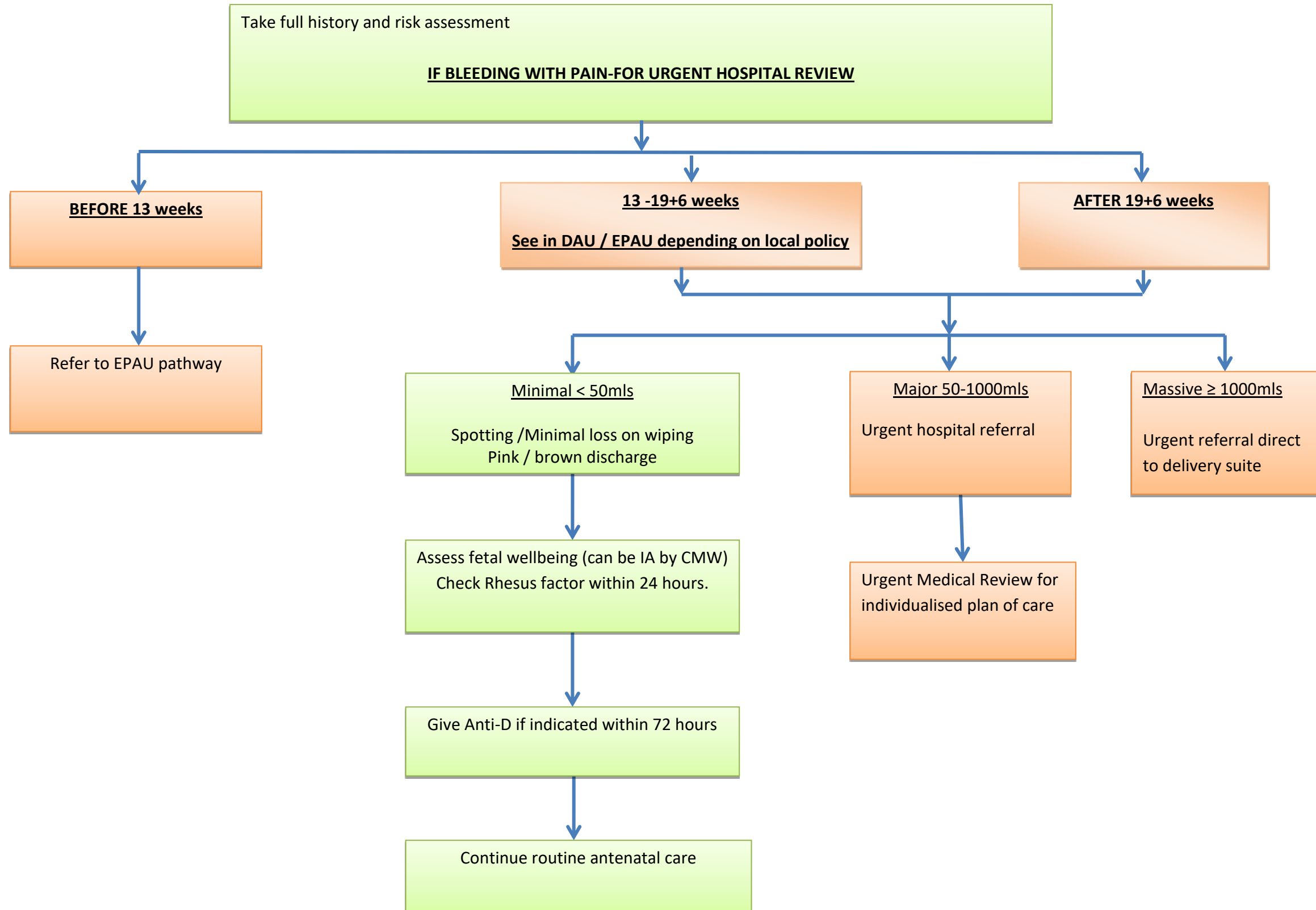




### No1 COMMUNITY AND SECONDARY CARE PATHWAY FOR BLEEDING IN PREGNANCY

- History/Risk Factors to consider:-**
- Onset and estimation of bleeding
  - Previous episodes
  - Preceding trauma
  - Location
  - Duration
  - Continuous pain, consider abruption
  - Abruption in previous pregnancy
  - Intermittent pain, consider labour/miscarriage
  - PROM consider vasa praevia
  - Fetal Movements
  - Smear history, PCB and discharge
  - Placenta Praevia (painless bleeding consider placental site)
  - PET
  - Consider social concerns –(depression/ Domestic Abuse)



Reference: RCOG (2011) Antepartum Haemorrhage Green Top Guideline No. 63.

This guidance does not replace the need for application of clinical judgment by clinicians to each individual presentation and specifics of the situation. Pathways current at time of Publication.